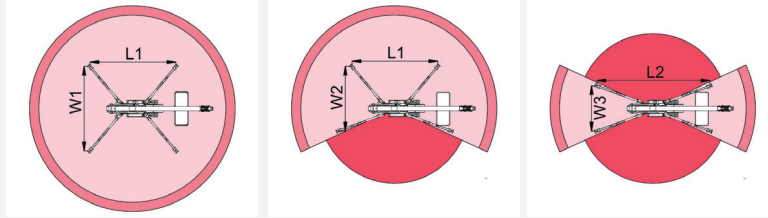
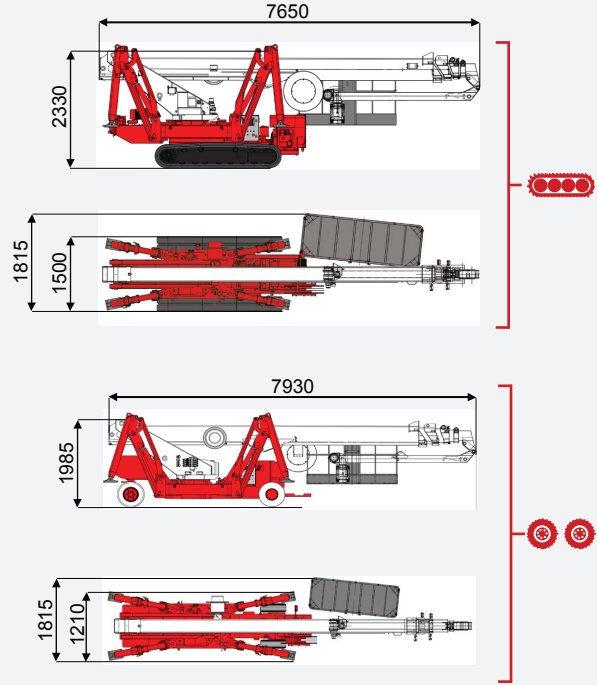
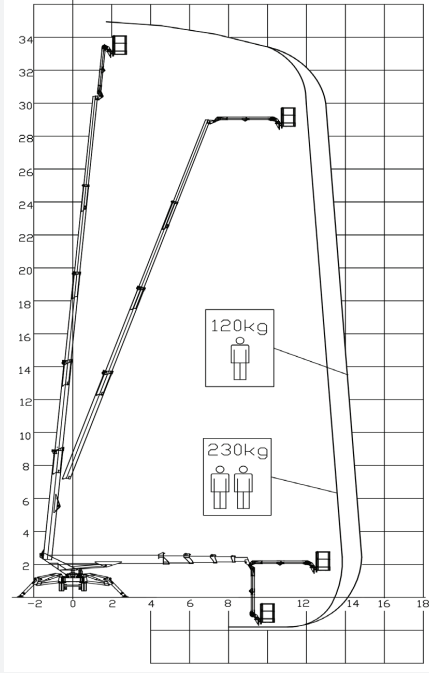




level
İŞ MAKİNELERİ

0850 969 59 79

Odunluk Mah. Lefkoşe Cad. Mıhraplı Plaza B Blok. No:9/3 Nilüfer - BURSA
www.levelmakine.com / level@levelmakine.com



L1	L2	W1	W2	W3
5025 mm	5990 mm	4250 mm	3510 mm	2770 mm

TEKNİK ÖZELLİKLER

TECHNICAL SPECIFICATIONS



		TSJ35/C	TSJ35/R
Çalışma Yüksekliği	Working Height	35 m	35 m
Platform Yüksekliği	Platform Height	33 m	33 m
Yatay Erişim	Outreach	14.5 m	14.5 m
Kaldırma Kapasitesi	Lift capacity	230 kg	230 kg
Kule Dönüşü	Turntable rotation	660°	660°
Sepet Ölçüleri	Platform size	180x70 m	180x70 m
Sepet Dönüşü	Hydraulic platform rotation	90°+80°	90°+80°
Max. Tırmanma kabiliyeti-kapalı	Gradeability - stowed	40%	25%
Sürüş Hızı (Km/sa)	Drive speed (km/h)	1.4 km/h	2 km/h
Ağırlık	Weight	6600 kg	6800 kg
Yere uygulanan maksimum basınç-ayaklar	Max.ground bearing pressure on levelling jacks	4,08 kN/m ²	4,20 kN/m ²
Yere uygulanan maksimum basınç	Max.ground bearing pressure	5,12 kN/m ²	5,27 kN/m ²
Genişlik	Width	1500 cm	1210 cm
Uzunluk	Length	7650 cm	7930 cm
Yükseklik	Height	2330 cm	1985

	Battery type	Battery charge	Add. Weight	Autonomy	Charging time	Electropump		
ECO	DC+AC	TEKERLEKLİ	48V 270 A/h 5h	230V-48V 45A	400 kg	6-7 h endless	7h	48V 9 kW