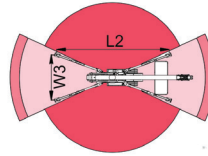
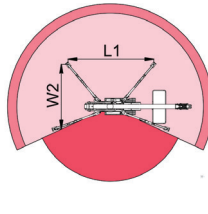
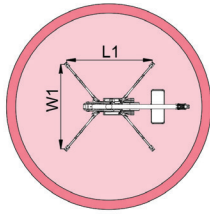
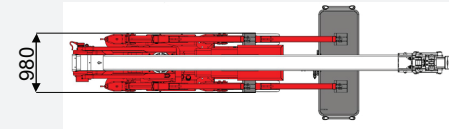
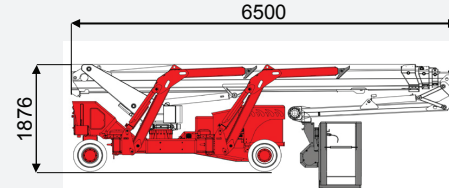
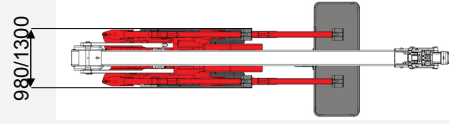
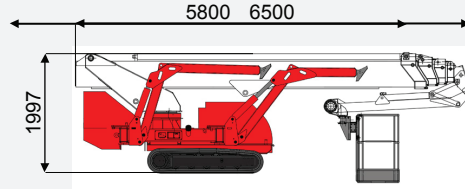
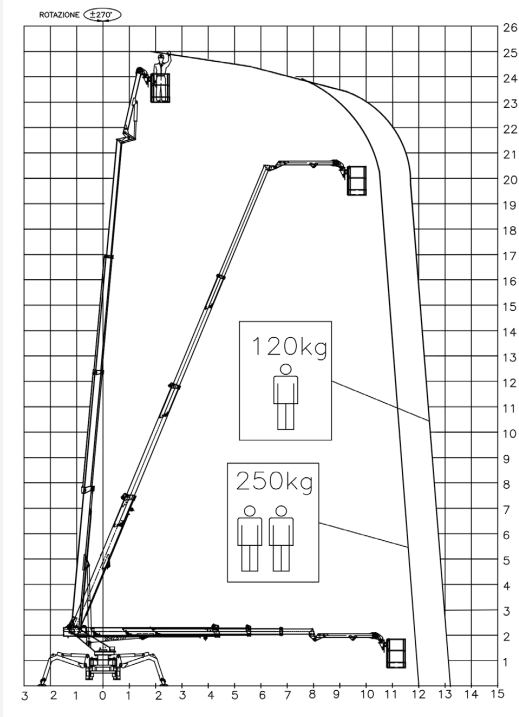




**level**  
İŞ MAKİNELERİ

0850 969 59 79

Odunluk Mah. Lefkoşe Cad. Mıhraplı Plaza B Blok. No:9/3 Nilüfer - BURSA  
[www.levelmakine.com](http://www.levelmakine.com) / [level@levelmakine.com](mailto:level@levelmakine.com)



L1	L2	W1	W2	W3
4971 mm	6542 mm	4853 mm	3732 mm	2610 mm

**TEKNİK ÖZELLİKLER**

**TECHNICAL SPECIFICATIONS**



**TSJ25/C**

**TSJ25/R**

Çalışma Yüksekliği	Working Height	25 m	25 m				
Platform Yüksekliği	Platform Height	23 m	23 m				
Yatay Erişim	Outreach	13 m	13 m				
Kaldırma Kapasitesi	Lift capacity	250 kg	250 kg				
Kule Dönüşü	Turntable rotation	540°	540°				
Sepet Ölçüleri	Platform size	180x70 cm	180x70 cm				
Sepet Dönüşü	Hydraulic platform rotation	90°+80°	90°+80°				
Max. Tırmanma kabiliyeti-kapalı	Gradeability - stowed	40%	25%				
Sürüş Hızı (Km/sa)	Drive speed (km/h)	1.4 km/h	1.3 km/h				
Ağırlık	Weight	3950 kg	3950 kg				
Yere uygulanan maksimum basınç-ayaklar	Max.ground bearing pressure on levelling jacks	1.78 kN/m2	1.78 kN/m2				
Yere uygulanan maksimum basınç	Max.ground bearing pressure	3.21 kN/m2	3.21 kN/m2				
Genişlik	Width	980 cm	980 cm				
Uzunluk	Length	6500 cm	6500 cm				
Yükseklik	Height	1997 cm	1876 cm				

			Battery type	Battery charge	Add. Weight	Autonomy	Charging time	Electropump
ECO	DC+AC	PALETLİ	48V 320 A/h 5h	230V-48V 45A	450 kg	6-7 h endless	7h	48V 12 Kw
ECO	DC+AC	TEKERLEKLİ	48V 270 A/h 5h	230V-48V 45A	400 kg	6-7 h endless	7h	48V 9 Kw
HYBRİD	Diesel+DC	PALETLİ & TEKERLEKLİ	24V 240 A/h 5h	230V-24V 35A	200 kg	2-3 h endless	7h	24V 5,5 kW